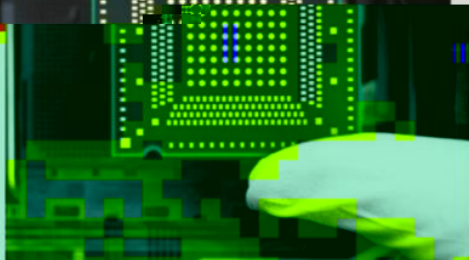
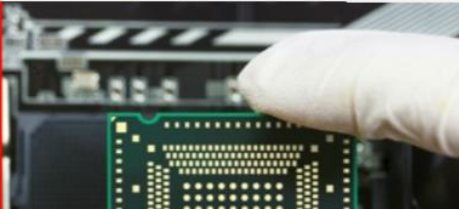


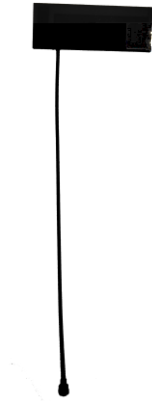
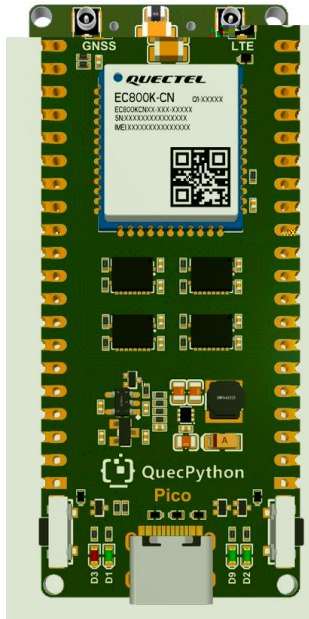
EC800X Pico



1

75 BU 75
75 75 = 79 = 75 7

BU 9 8B5



BU 75

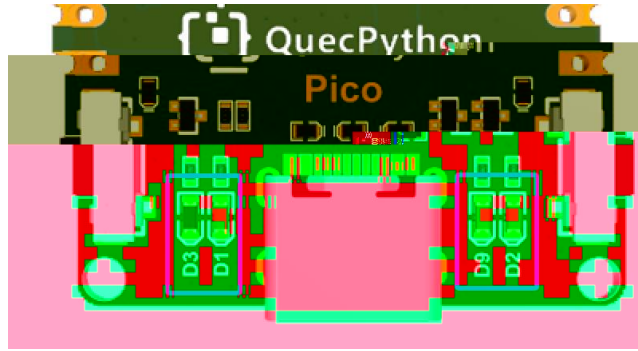
- 75 US
- F 5
- (' ' 6 B (B5 4
- % %%H 9 B A
- 365
-
- G3 DF 5 % EB BI

- F 5
 - UB
- 2



	B @%	A	%%#
'	B @%	A	%%#
(B @%	A	%%#
)	B @(A	%%#
	B @)	A	%%#
	B @	A	%%#
%	B @'	A	%%#
%	B @	A	%%#
%	B @	A	%%#
%%	B @	A	%%#
%	B @	A	%%#
%	F 6		%%#
%	D 6		%%#
%	B @	A	%%#
%	B @%	A	%%#
%	F 6	V T	%%#
	D 6	V T	%%#

'H F 5
'H
3 F 5 'H GE4 GE4
3F ' 3F
(% ')(
' % ((T 3F
5 UB G3 DF
%



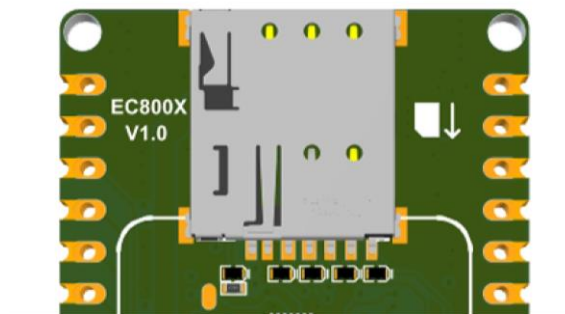
6

6		
		上

6 6

)'

3 SIM



0

@ @ A E
H % H GE

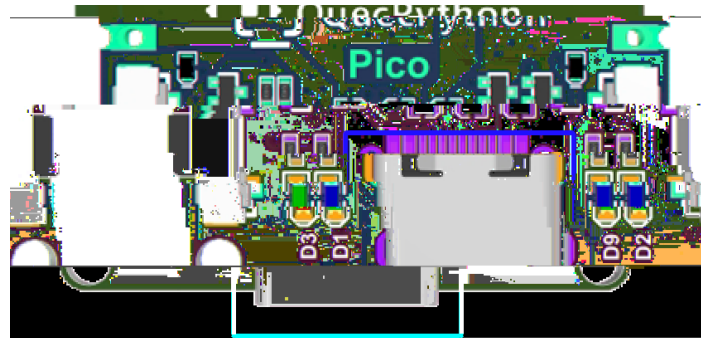
GE

7FE

F-

/

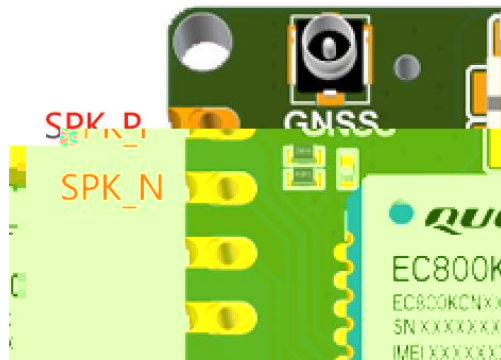
4 USB



20

	F 5 GE4	GE4	GE4
GE4		T	T
	3F	9 @	@ 73

5 SPK



0

●

●

/ D / %

34

% I 2 F: 6

/

6 ADC

365



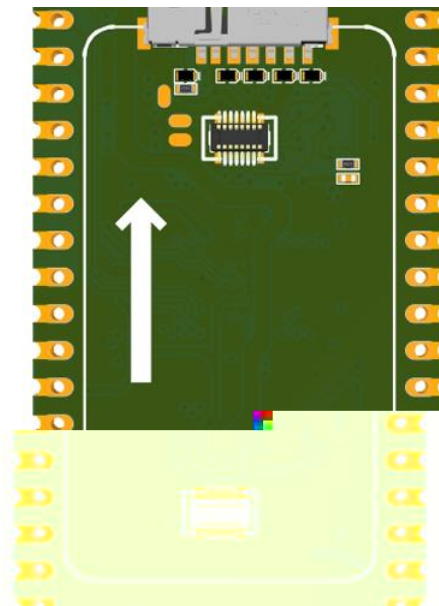
!

% 365

参数	最小值	典型值	最大值	单位
ADC0 电压	0	-	1.2	V
ADC1 电压	0	-	1.2	V
ADC 分辨率	-	-	12	位

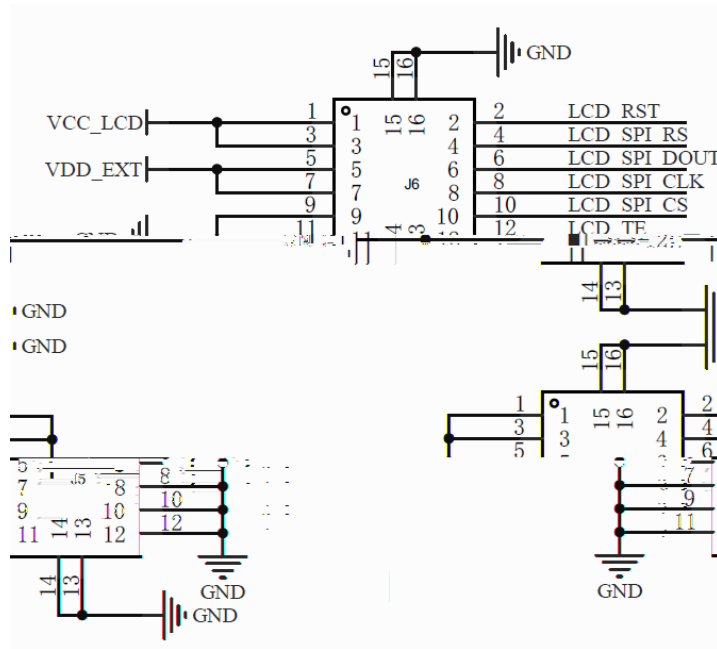
7 LCD

56



!

/



!

) U) D94 % V - S F8F 56

56

NO.	Item	Contents	Unit
1	LCD Size	1.47	inch
2	Display Mode	Normally black	-
3	Resolution	172(H)RGB x320(V)	pixels
4	Pixel pitch	0.0337(H) x 0.1011(V)	mm
5	Active area	17.3892(H) x 32.352(V)	mm
6	Module size	19.29(H) x 32.384(V) x 1.46(D)	mm
7	Pixel arrangement	RGB Vertical stripe	
8	Interface	4 Line SPI	
9	Display Colors	262K	
10	Drive IC	ST789V3	
11	Luminance(cd/m2)	350 (TY1)	
12	Viewing Direction	All View	
13	Backlight	3 White LED Parallel	
14	Operating Temp.	-20°C~+70°C	
15	Storage Temp.	-30°C~+80°C	
16	Weight	2.7	g

8

引脚名	引脚号	I/O	描述	备注
ANT_MAIN	35	AIO	主天线接口	50 Ω 特性阻抗。

备注

模块支持 Wi-Fi Scan 功能。由于共用主天线接口，两种功能不可同时使用，时分复用，Wi-Fi Scan 只接收不发送。

(

工作频段	发送 (dBm)	接收 (dBm)	备注
2170	LTE-FDD B1	1920~1980	2110~2170
1880	LTE-FDD B3	1710~1785	1805~1880
894	LTE-FDD B5	824~849	869~894
960	LTE-FDD B8	880~915	925~960
2025	LTE-TDD B34	2010~2025	2010~2025
2620	LTE-TDD B38	2570~2620	2570~2620
1920	LTE-TDD B39	1880~1920	1880~1920
2400	LTE-TDD B40	2300~2400	2300~2400
2675	LTE-TDD B41	2535~2675	2535~2675

)

接收灵敏度	最小值	频段	最大值
-122 dBm	< -39 dBm	LTE-FDD B1/B3/B5/B8	23 dBm ± 2 dB
-122 dBm	< -39 dBm	LTE-TDD B34/B38/B39/B40/B41	23 dBm ± 2 dB

频段	接收灵敏度（典型值）（dBm）			3GPP 要求 （主集 + 分集）
	主集	分集	主集 + 分集	
LTE-FDD B1 (10 MHz)	-99.5 dBm	-	-	-96.3 dBm
LTE-FDD B3 (10 MHz)	-99.0 dBm	-	-	-93.3 dBm
LTE-FDD B5 (10 MHz)	-98.5 dBm	-	-	-94.3 dBm
LTE-FDD B8 (10 MHz)	-99.0 dBm	-	-	-93.3 dBm
LTE-TDD B34 (10 MHz)	-100.0 dBm	-	-	-96.3 dBm
LTE-TDD B38 (10 MHz)	-99.0 dBm	-	-	-96.3 dBm
LTE-TDD B39 (10 MHz)	-100.0 dBm	-	-	-96.3 dBm
LTE-TDD B40 (10 MHz)	-100.5 dBm	-	-	-96.3 dBm
LTE-TDD B41 (10 MHz)	-99.0 dBm	-	-	-94.3 dBm

- 9 @ EE 9 @ EE
- 9 BE 46E 9 A @ EE 9 S
- @ 73 % @ 73 3F GE4
- 9 @ EE 3F

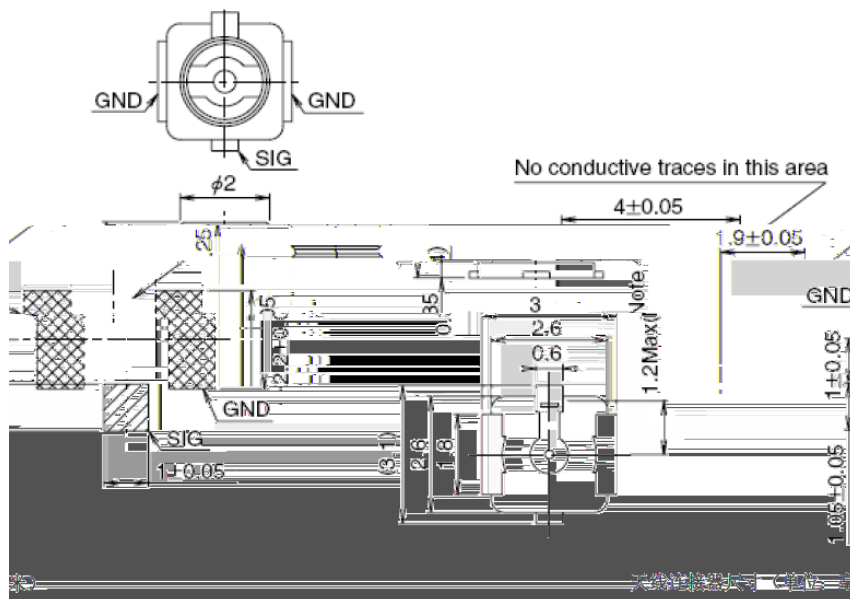
9 BE	')' %	:
46E	' ((4	
9 S	')' (7	
9 A @ EE	')' ('	

9 @EE

参数	条件	典型值	单位
灵敏度	捕获	-146	dBm
	重捕	-160	
	追踪	-160	
首次定位时间	冷启动 @ 空旷区域	28	s
	温启动 @ 空旷区域	27	
	热启动 @ 空旷区域	27.3	

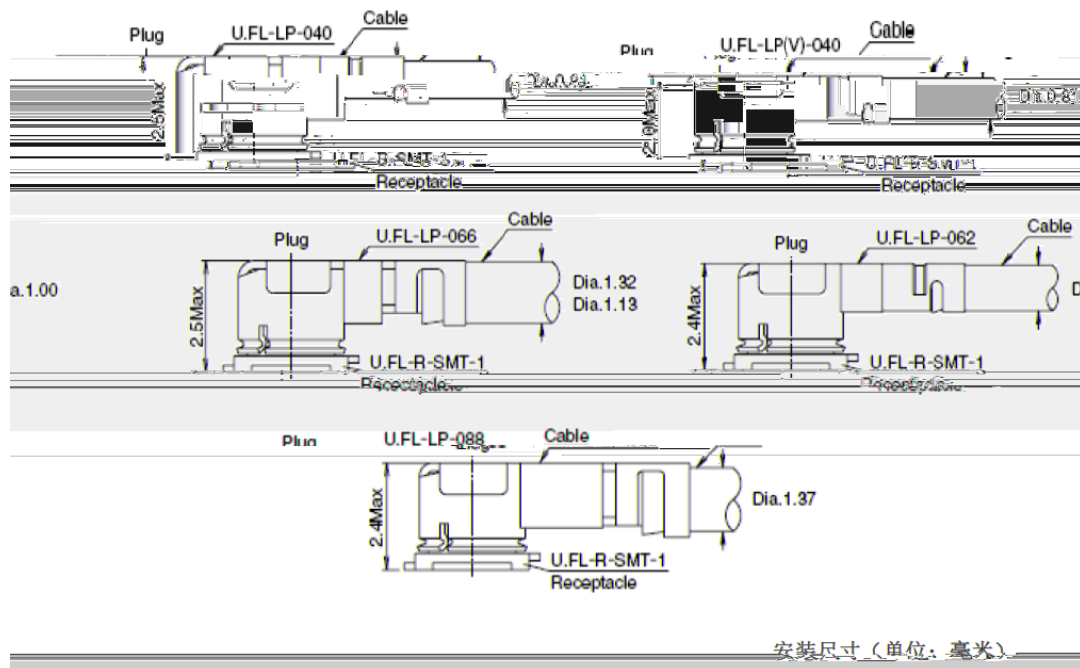
备注

1. 追踪灵敏度一般也可以保持对导航信号的跟踪和定位所需的最低信号电平。(持续定位至少3分钟)
2. 重捕灵敏度一般是指接收的导航信号失锁后3分钟内重新捕获导航信号并正常定位所需的最低信号电平。
3. 捕获灵敏度一般是指接收的导航信号失锁后3分钟内重新捕获导航信号并正常定位所需的最低信号电平。



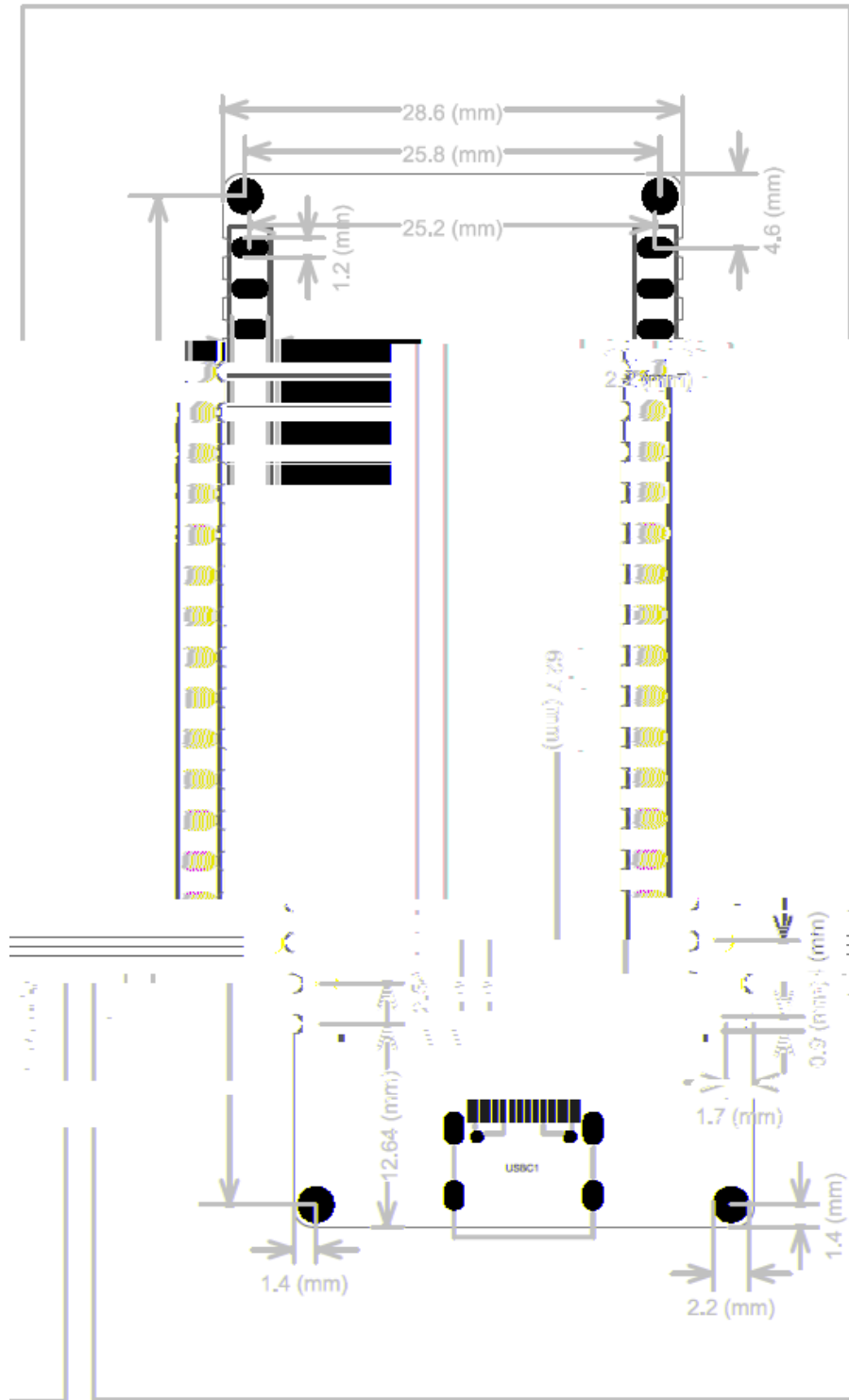
	U.FL-LP-040	U.FL-LP-066	U.FL-LP(V)-040	U.FL-LP-062	U.FL-LP-088
Part No.					
Mated Height	2.5mm Max. (2.4mm Nom.)	2.5mm Max. (2.4mm Nom.)	2.0mm Max. (1.9mm Nom.)	2.4mm Max. (2.3mm Nom.)	2.4mm Max. (2.3mm Nom.)
Applicable Coaxial cable	Di. 1.13mm cable	Di. 1.13mm and Coaxial cable	Di. 1.32mm and Coaxial cable	Di. 1mm Coaxial cable	Di. 1.37mm Coaxial cable
Weight (mg)	71.7	53.7	59.1	34.8	45.5
RoHS				YES	

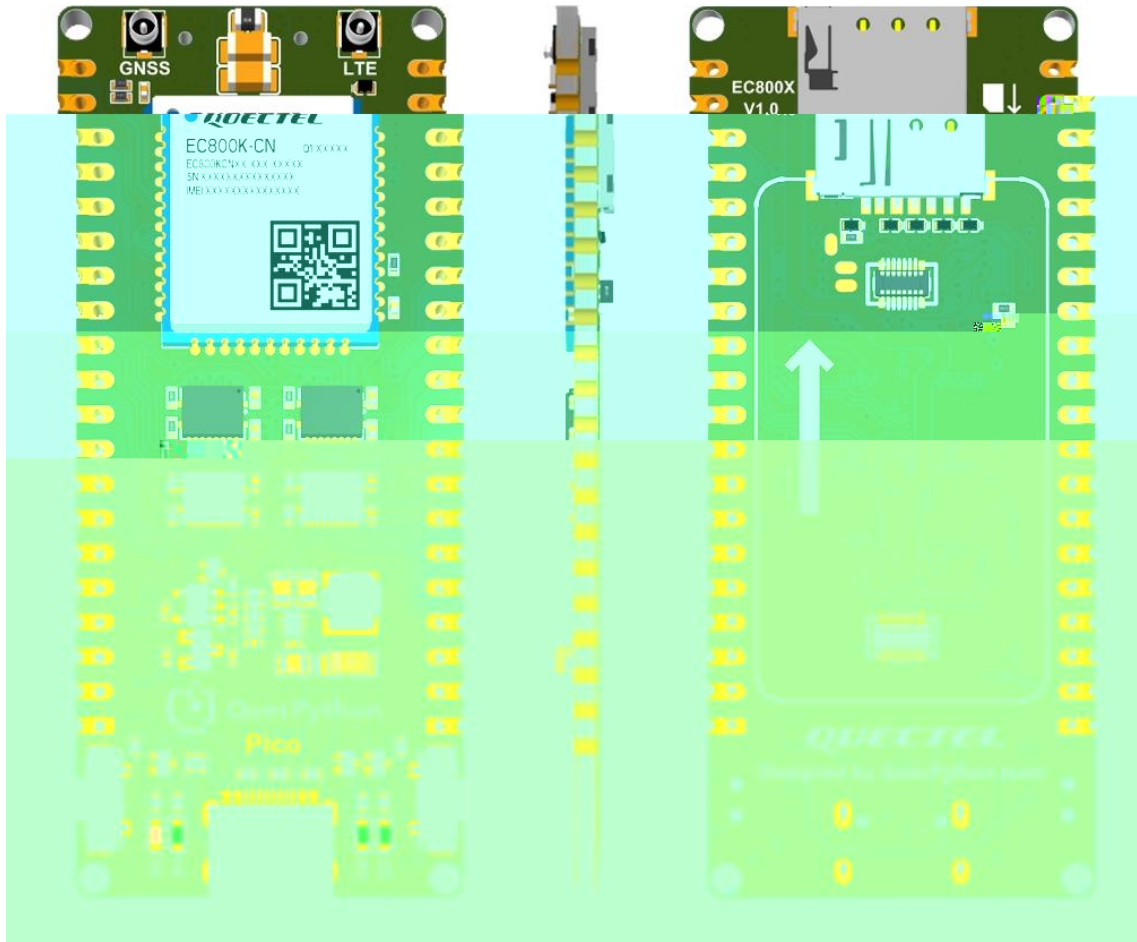
U.FL-LP 连接线系列



% 7E6

'H 9 @6			=H
GE4			=H
		'	=H
E			=H
			=H

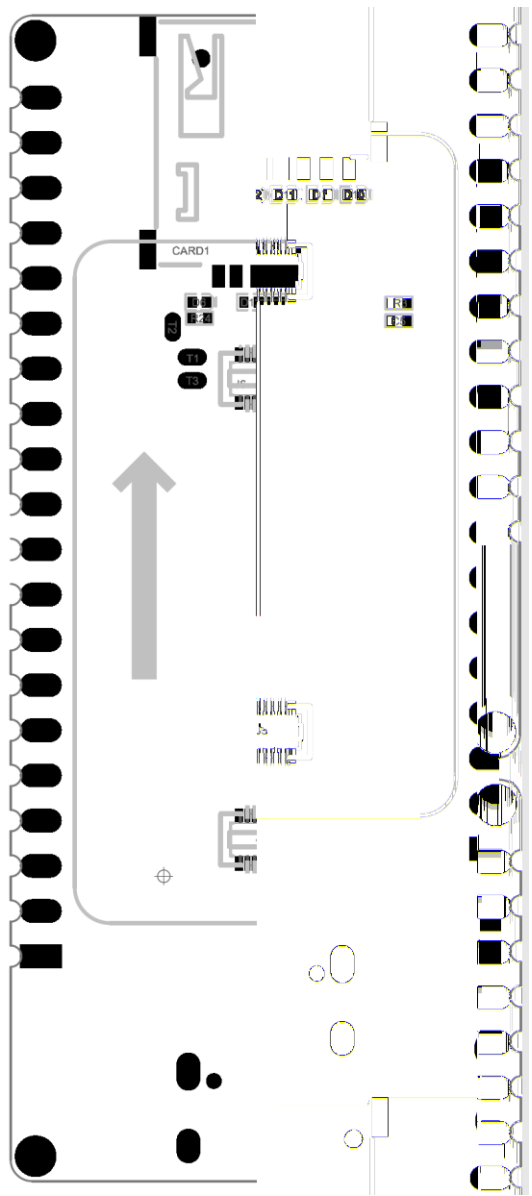
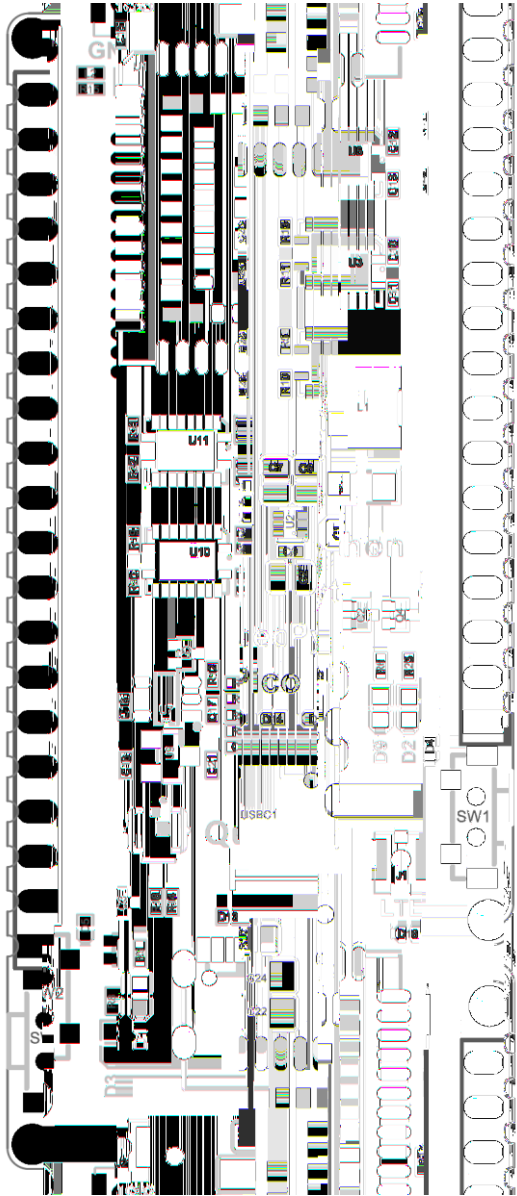


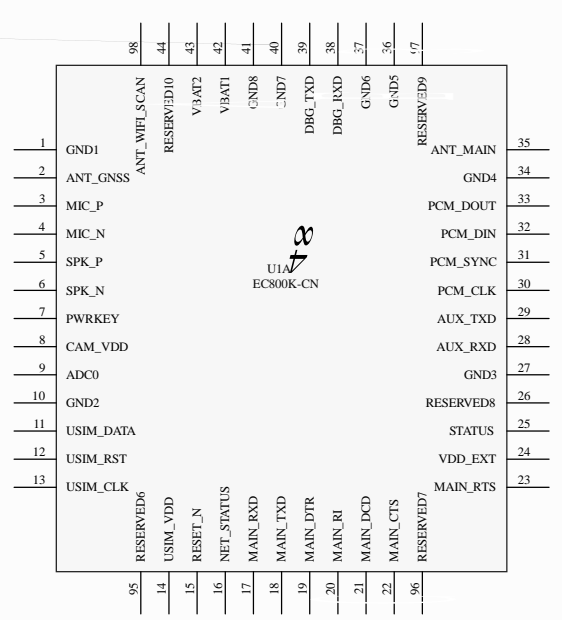


11

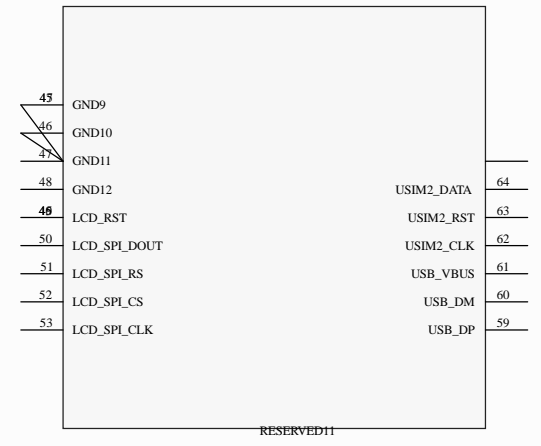
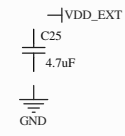
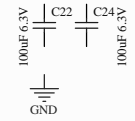
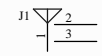
B5

12





U1A
EC800K-CN



1

2

3

4

A

A

B

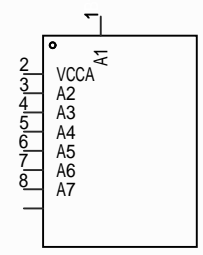
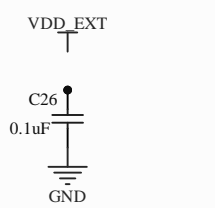
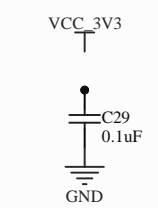
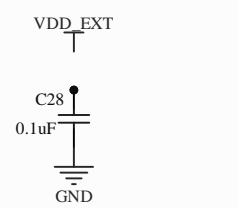
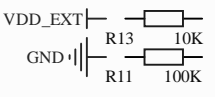
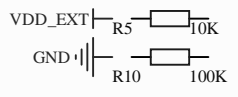
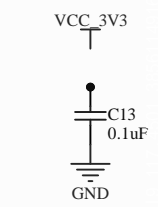
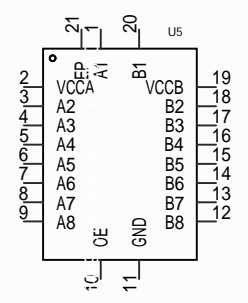
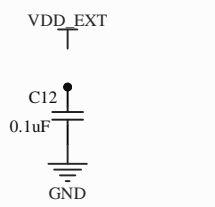
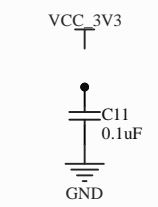
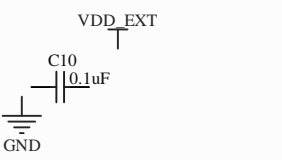
B

C

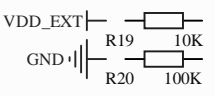
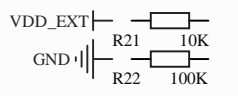
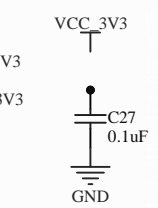
C

D

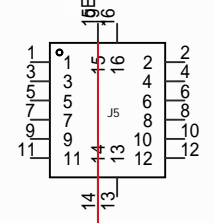
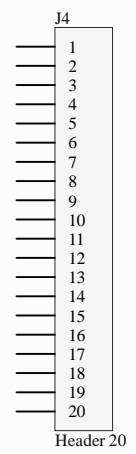
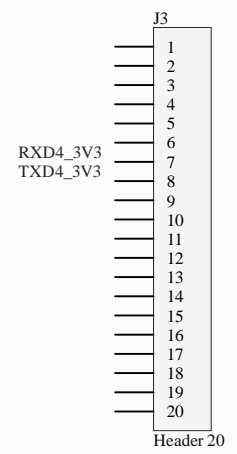
D



I2C0_SCL_3V3
I2C0_SDA_3V3



Level Translator



1

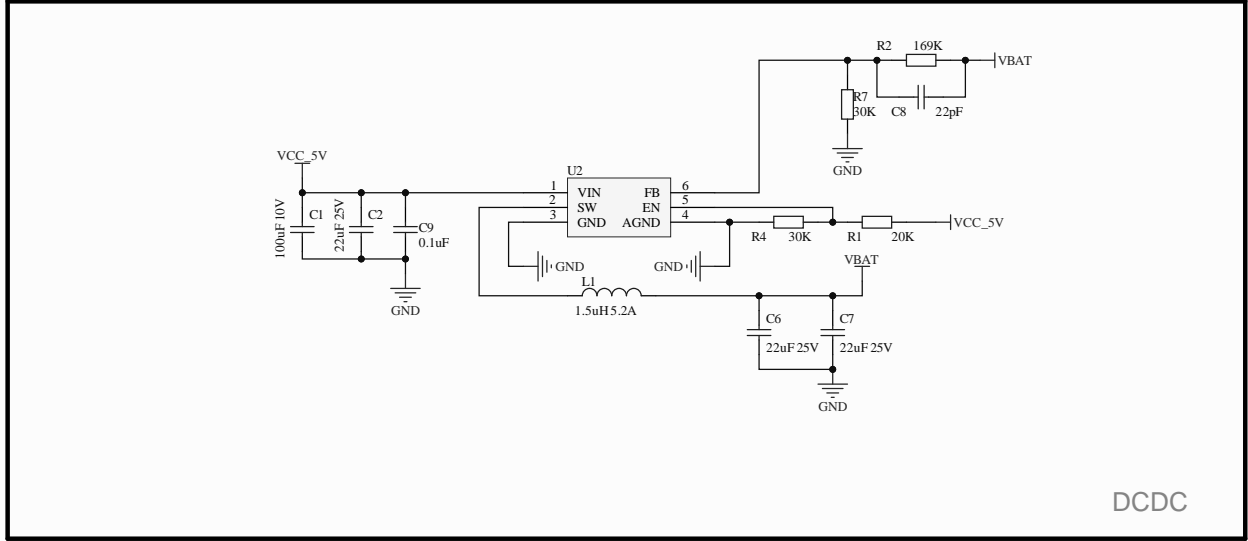
2

3

4



LDO



DCDC

